



FLEXIAGENT

Market Leading, Independent Estate Agents



New Cut Lane

Southport, PR8 3DW

Offers In The Region Of £250,000

Flexi Agent are delighted to present this three bedrooms semi detached bungalow 'SUNNY BOWER COTTAGE' to the open market. Situated a prime, semi-rural location in close proximity to a wealth of amenities. New Cut Lane provides excellent access to Southport, Birkdale village, Halsall & Ormskirk.

The property briefly comprises of; entrance porch, hall, three bedrooms, shower room, spacious living room with double doors leading to rear & nicely presented kitchen.

Externally the property offers a large driveway parking & garden to the front, to the rear offers seating entertainment area followed by a westerly facing sun catching garden with mature shrubs & low maintenance Astro turf lawn.

Viewings available upon request.

Freehold
EPC D
Council tax band: C

- Three bedrooms
- Semi detached bungalow, circa 865 sqft
- Excellent access to Southport, Birkdale village, Halsall & Ormskirk
- Shower room
- Spacious living room
- Nicely presented kitchen
- Semi rural location
- Large driveway parking & garden to the front
- Westerly facing sun catching garden with mature shrubs & low maintenance Astro turf lawn
- Viewings available upon request

Viewing

Please contact our Flexi Agent Southport Office on 01704 889455 if you wish to arrange a viewing appointment for this property or require further information.



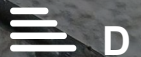
3



1



1



D

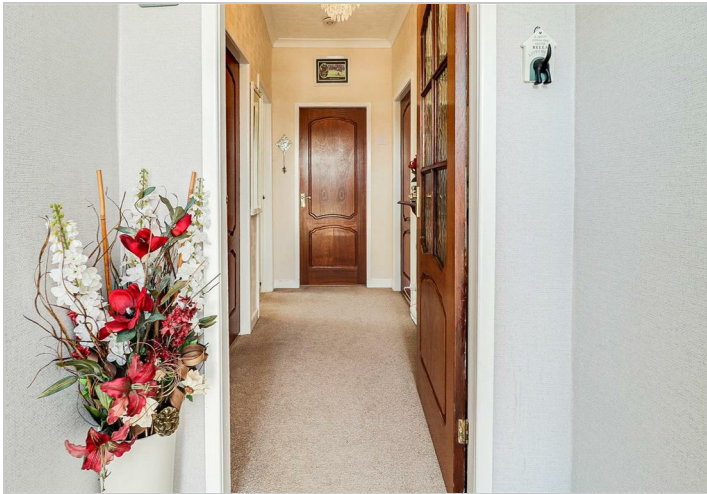
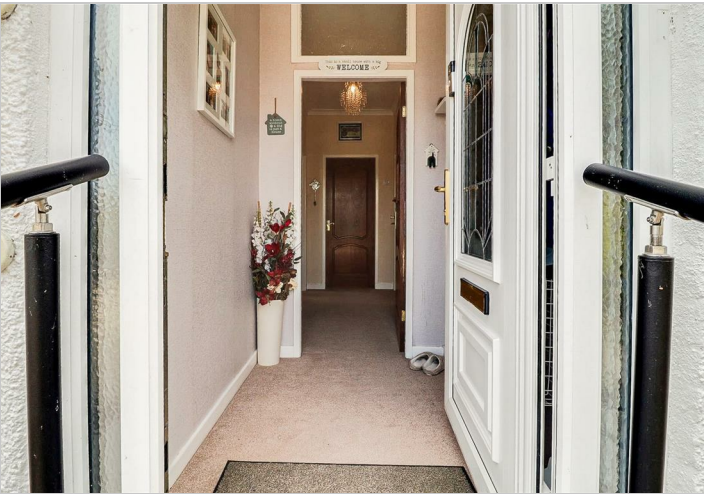
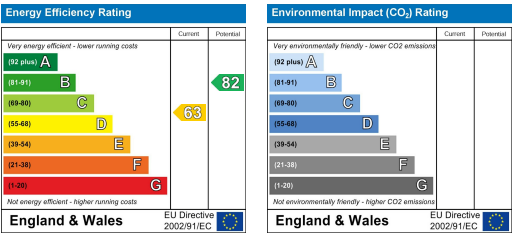
Floor Plan



Area Map



Energy Efficiency Graph



These particulars, whilst believed to be accurate are set out as a general outline only for guidance and do not constitute any part of an offer or contract. Intending purchasers should not rely on them as statements of representation of fact, but must satisfy themselves by inspection or otherwise as to their accuracy. No person in this firms employment has the authority to make or give any representation or warranty in respect of the property.